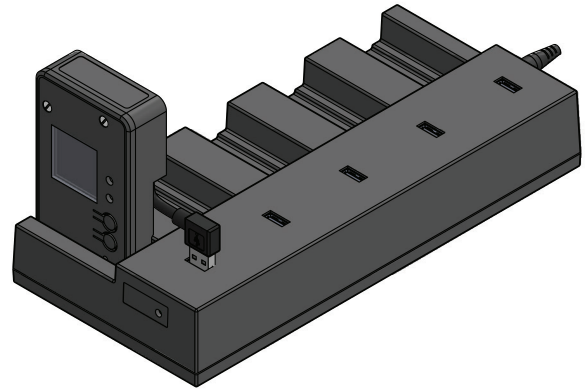


Charging station datasheet

The charging station is compatible for use with the Controlant Saga™ and Saga-P real-time data loggers. The charging station can charge up to five devices simultaneously. An LED power indicator light displays when the charging station is connected to power.



Technical specifications

Charging station material	Black matte ABS plastic
Weight	240g
Length	249 mm (9.8 in.)
Width	119 mm (4.7 in.)
Height	45 mm (1.8 in.)
Input voltage	5 V
Input current	5 A
Output current	750 mA for each of the 5 USB charging ports
USB connector	Five Type A receptacle connectors (see technical sheet for specifications)
Cable	1m USB cable (39.4 in.)

Adapter specifications

Features	Up to 36 W continuous power (DoE Level VI, CoC Tier 2 efficiency). Universal voltage range. Over voltage, over current, and short circuit protections
Certifications and approvals	CE, FCC, ISED
Part number	SMI36-5-V-P6
Output voltage	5V DC

